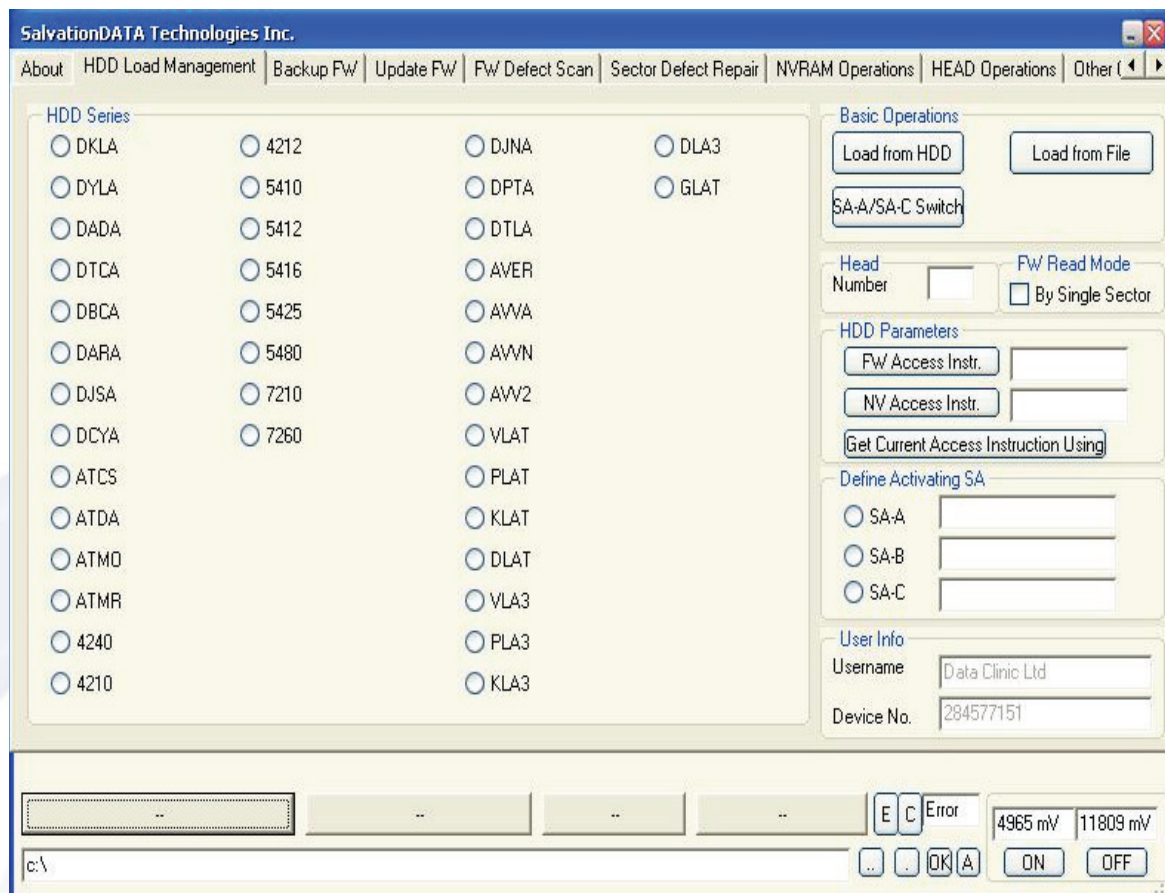




### 5.2 Fix an NVRAM corrupted drive with manually matched data area parameters

Before starting to repair the NVRAM, the drive needs to be diagnosed correctly. For an undetectable drive the indications are usually as shown below. They are the same as for a firmware failure due to NVRAM corruption.



To fully diagnose the drive, we need to load the drive from file by selecting the correct series from the table. After that, the drive status should become ready and the starting address of the drive should be displayed.